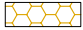
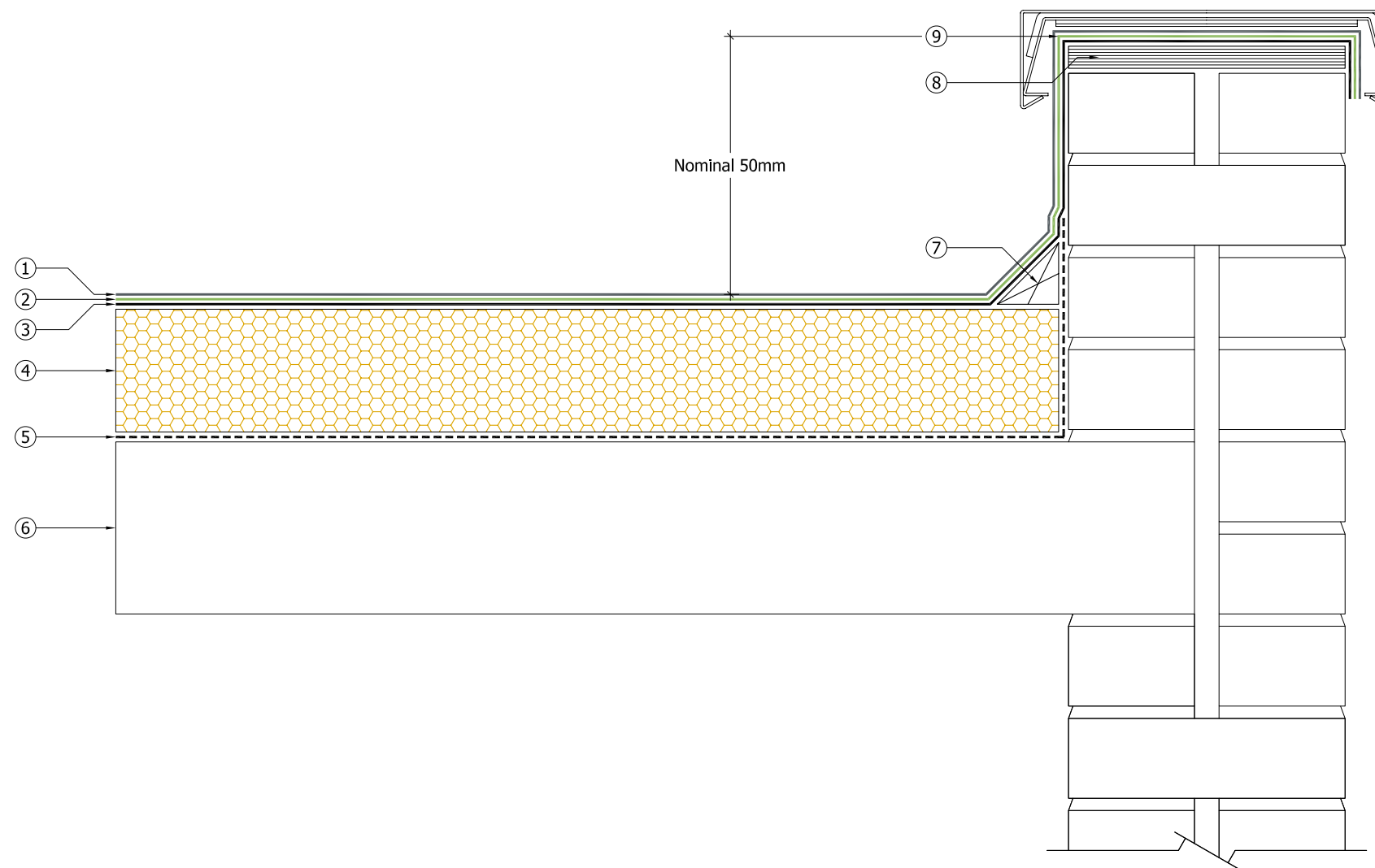


Key

- ① — Decaflex Top Coat applied in strict accordance with Sika Liquid Plastics Project Specification
- ② — Decaflex Embedment Coat applied at correct coverage rate for the substrate surface conditions embedded with Sika Reemat Premium GFM
- ③ — Sika Liquid Plastics Carrier Membrane SA applied in strict accordance with Sika Liquid Plastics Specification
- ④  Deco therm insulation bonded in strict accordance with Sika Liquid Plastics Project Specification
- ⑤ - - - - S-Vap 5000E SA self adhesive Vapour Control Layer [as required] applied to substrates prepared and primed with Sika Primer 600 in strict accordance with Sika Liquid Plastics Project specification
- ⑥ Existing substrate prepared in strict accordance with Sika Liquid Plastics Project Specification
- ⑦ Tanalised timber fillets [as required] bonded with Decostik SP
- ⑧ Suitable mechanically fixed Cavity Closer [as required] prepared and primed with Sika Primer 600 prior to the application of Sika Liquid Plastics Carrier Membrane SA
- ⑨ Fully reinforced Decaflex Waterproofing System dressed on to and over prepared primed upstands, terminated in a downward facing position on the external face **NOTE:** New or reinstated cappings should be installed in accordance with the manufacturer's recommendations and all waterproofing penetration proposals approved by Sika Liquid Plastics



Sika Liquid Plastics
 Sika House
 Miller Street
 Preston
 Lancashire PR1 1EA
 Telephone: 01772 259781
 Email: technical.customer.services@uk.sika.com
 Web: www.liquidplastics.co.uk

This drawing is solely intended to illustrate the correct application of Sika Liquid Plastics products and systems. It must be read in conjunction with the appropriate specification and current issue of relevant Product Data Sheets. All elements bearing reference to structural and/or thermal design are shown indicatively and **should not be used** in whole or in part for any aspect of project design without consulting the relevant authorities.

For refurbishment projects, all aspects of the existing roof are deemed to be fully compliant with BS 6229:2003 [Code of Practice for Flat Roofs with Continuously Supported Coverings] or improved upon for instances where these standards are not met.

Site-specific details not covered by our standard range can be obtained by providing relevant information to the email address shown.

Project No:	
DWG No:	Revision:
Project:	
Drawing Title: Built Up Roof Termination tp protected parapet upstand beneath new/reinstated metal capping	
Scale: NTS @ A3	Drawn:
Date:	

